



Tiemann Landtechnik GmbH & Co. KG

A1-Traktor
 Rudolf-Diesel-Straße 7
 27419 Sittensen

Tel.: (0 42 82) 50 90 – 900
 Fax: (0 42 82) 50 90 – 555

Fliegl VFW 18000 MAXX LINE PLUS

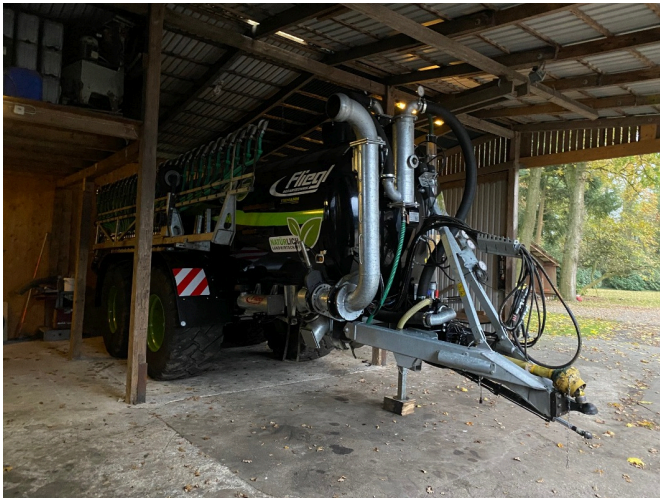
Printout from: 05.02.2025

Internal reference number for your request:
MXFL/0017

Year of manufacture: 2023
 Design: Manure technology + manure technology
 Category: Vacuum Façade

EUR 118,000.⁰⁰

(plus VAT 19% EUR 140,420.⁰⁰)



Detail overview

An overview of the equipment features and the property description can be found on the following page.

Equipment

Design	Vacuum
Air brake	✓
Filling quantity	18.000,00
hydr. foldable	✓
Pump type	Vacuum pump
Tyres	750/60R30.5
Working width	15
Landing gear	Tandem axle
permissible total weight	24000
Filling system	Suction arm
Attachment	below
Ball head K 80	✓
Suction accelerator	✓
Container material	Steel
State	Used
Technical condition	Good

Description

- fliegl-vfw-18000-maxx-line-plus
- -
- ca-12000-m3
- -
- verfuegbar-ab-april-2025
- -
- permissible total weight 24,000 kg, up to 40 km/h, axle distance over 1,800 mm
- adjustable drawbar bottom hitch
- Ball head K80
- Tiller suspension incl. drum tipping cylinder and drum support foot
- 2-circuit air brake with ALB
- Parabolic suspension Gigant-Agregat Plus
- Axle design 410 x 180 brake drum BPW
- Forced steering: 2 brake axles, front rigid, rear steered, forced steering
- 40 km/h version with mudguard, underride guard and side marker lights
- Tires 750/60 R30.5 Spring center 900 mm / Load capacity per wheel 6,740 kg with
- Wheel cut-out
- Container in steel execution galvanized and painted outside
- Compressor MECII 13500 I Battioni max. 1,000 rpm. - heat resistant fins
- Preparation for filling dome 40 mm front
- Blind flange 8 rear
- 8 Flange centered at the front under the barrel
- 6 Intake valve Perrot with quick coupler left
- Level indicator
- Level indicator with plexiglass 100 mm
- Siphon
- Foam separator
- hydraulic slider at the back of the manhole
- continuous strong angle frame
- Manhole 600 mm rear
- 3 baffles
- LED light package: LED lighting 12 V, 7-pin plug
- LED additional lighting on top, side marker lights, clearance lights and
- -
- Fliegl Skate 150 trailing shoe rods
- 15 m working width
- 60 exports
- 1550 kg
- Transport width 2.60 m
- 8 kg coulter pressure
- Automatic slope compensation
- -

- Price applies to existing condition. Offer subject to change. Subject to errors, changes and prior sale.

- Â
- Â
- Â